

Working With Existing Panoramas in Photovista Panorama 3.0

Working With Existing Panoramas

In this chapter you will learn how to import existing panorama files and publish panorama, including exporting to HTML.

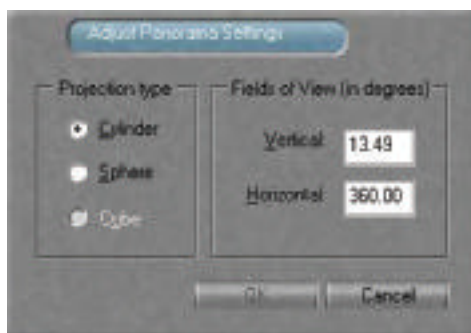
Opening a panorama

You can open existing panorama files and save them as IVR files to play in the Zoom Viewer.

Note: If you're opening a cube-shaped panorama created from a 3D rendering program, the images that make up the panorama will be arranged in a particular vertical order. From top to bottom, the order is as follows: north, east, south, west, up, and down. If your 3D rendering program does not output a cube panorama in this manner, consult your program's documentation to see if you can reconfigure the panorama before opening it in Photovista.

To open a panorama in Photovista:

1. Choose Open Panorama from the File menu. The Open dialog appears. Navigate to the folder that contains the panorama file you want to open. Select the panorama file and click Open. The panorama appears in a window and the Adjust Panorama Settings dialog appears.



2. In the Projection Type field, click the button that matches the shape of the panorama. (Cube is available only if your images have a 1:6 aspect ratio; that is, height = width x 6.)
3. Adjust the field of view settings if necessary. The Vertical and Horizontal Field of View settings change according to the shape you chose. For more details, see 'Adjusting field of view settings'.
4. Click OK. The panorama appears in a new window.
5. You can adjust the settings again by choosing Adjust Settings from the Panorama menu in the Preview or Stitched Result window.
6. To view the panorama in action, choose View 3D Mode from the View menu. Then drag the pointer over the panorama horizontally and vertically. Press Shift to zoom in. Press Ctrl to zoom out.

Printing your panorama

Printing a panorama from Photovista is as simple as printing any image. You can print your panorama after you do a preview or full stitch.

To print a panorama:

1. Select Print from the File menu or click the Print icon. The Print dialog appears.
2. Choose Landscape mode to get the widest panorama.
3. Click OK to print the panorama.

You've now successfully created your panorama. In Chapter 4, Working with Panoramas, you'll find out how to publish your panoramas, export your panoramas to HTML, and open panoramas created in other programs to work with them in Photovista.

Exporting a panorama

Exporting to HTML

Photovista makes creating panoramas for the Web easy by generating the HTML code necessary to embed the panoramas in a Web page. When you save a panorama, you can tell Photovista to export it to HTML and specify which version of the Zoom Viewer to use to display the embedded image.

Java viewer and JPEG panorama format

If you save your panorama as a JPEG file for use with the Java viewer, then it's easy to share panoramas on a personal web site. In order to do this you need to put the following files on the website: The JPEG panorama, the IVR file that describes the panorama, and the Java viewer JAR file. No special server configuration is required and any Java enabled can view the panoramas.

The Plug-in Viewer is a browser plug-in for Netscape and Internet Explorer browsers. The plug-in has the advantage that it only needs to be installed once.

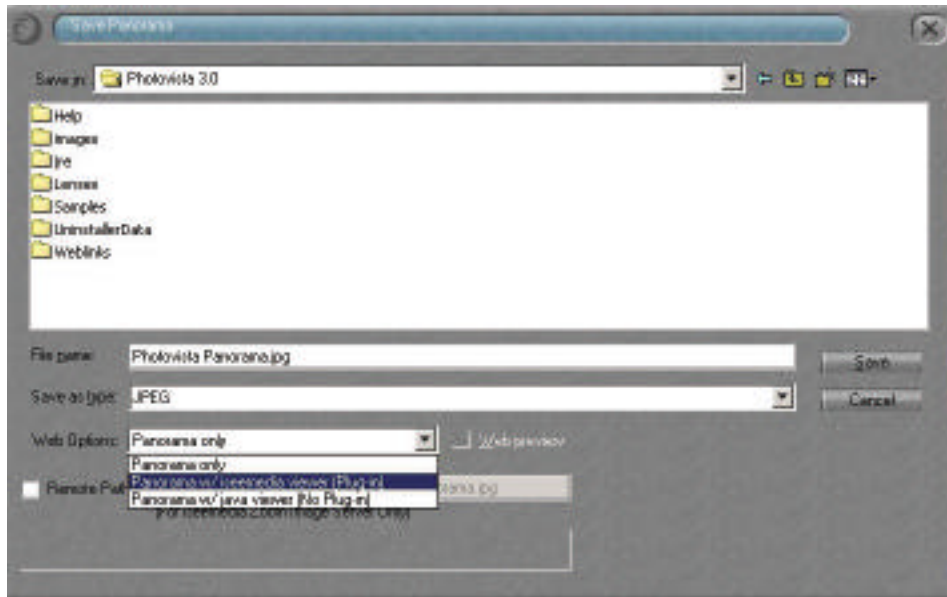
You should consider saving your panorama as a Flashpix file if you have access to a web site with the Zoom Image Server installed. Flashpix panoramas can be much higher resolution than JPEG panoramas, allowing users to zoom in and out to view details of the panorama.

Note: Some web servers have case-sensitive filenames. For example, they don't treat .ivr the same as .IVR and they don't treat .jpg the same as .JPG. If you are having errors viewing your panorama, check that the IVR filename in the HTML is the same as the IVR filename on the web server. The filename of the JPEG file is listed in the IVR file created by Photovista. You can open the IVR file using a simple text editor and check the filename of the JPEG file to see that it is the same as the filename on the web server.

Photovista will generate the HTML for embedding the image in a Web page with your chosen version of the viewer. You can open the HTML file Photovista outputs to cut and paste the HTML into the source file for your Web page.

To export a panorama to HTML:

1. After you do a full stitch of your panorama, choose Save Panorama As from the File menu or click the Save icon in the Stitched Result window. The Save Panorama dialog appears.



2. Enter a name for the panorama file in the File Name field.
3. Select the file type for the panorama image from the Save As Type list. The default file type is JPEG. When you save as JPEG or FPX, the Compression Options dialog box appears for you to choose the amount of compression you want. Medium is the default; for better image quality, select Best.
4. Select the client viewing option from the Web Options list. Photovista generates the HTML for the version of the Zoom Viewer you specify.
 - Panorama only (default) – Saves the panorama as JPEG or BMP.
 - Panorama with the iseedmedia viewer (Plug-in) – Saves the panorama to be previewed using the iseedmedia Plug-in viewer.
 - Panorama with the Java Viewer (No Plug-in) - Saves the panorama to be previewed with the Java Viewer.
5. Check the Web preview box to automatically launch your Web browser and display the HTML file with your panorama in the chosen version of the viewer.
6. If you plan to store the FPX file on a different server than the IVR file, select the Remote Path checkbox and enter the full URL for the FPX file. Photovista writes the URL into the IVR file so that client viewers will know where to locate the FPX file.
7. Click Save to save the panorama and export it to HTML.

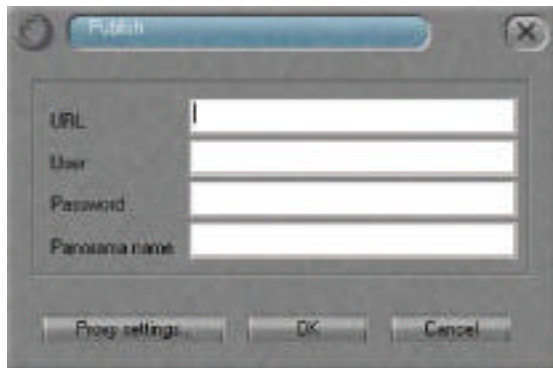
To place the HTML into your Web page:

1. Use any text editor to open the HTML file output by Photovista. You'll see the clearly designated HTML code necessary to embed your panorama in your Web page, using the version of the Zoom Viewer that you chose.
2. Copy the designated HTML from the text file into the HTML file for your Web page.

Note: To set up a Web server to show the IVR files Photovista creates, see 'Setting up a Web server'.

Publishing your panoramas

When you are ready to publish or upload your finished panorama to an Application Server (i.e. the Zoom Image Server), click the Publish icon in the Stitched Result window.



The Publish dialog will be displayed. Enter the following information:

- URL - The URL that points to the Application Server
- User - The username of the account holder of the Application Server
- Password - The password of the account holder of the Application Server
- Panorama name - Enter a name for your panorama

Once you have entered all the information, click OK.

Adding panoramas to your Web pages

How you add your panoramas to your Web pages depends on the Zoom Viewer options you choose. The viewers that display panoramas include:

- Zoom Viewer—Plug-in Version (works with Netscape Navigator or Microsoft Internet Explorer)
- Zoom Viewer—ActiveX Version (works with Microsoft Internet Explorer only)
- Zoom Viewer—Java Version for JPEG Panoramas
- Zoom Viewer—Java Version for Flashpix Panoramas

The developer documentation for each viewer provides the procedure for placing panoramas in your Web pages and for adding additional functions. To view these documents and for complete information about the Zoom Viewers, visit the Products section of the iseemedia website at www.iseemedia.com.